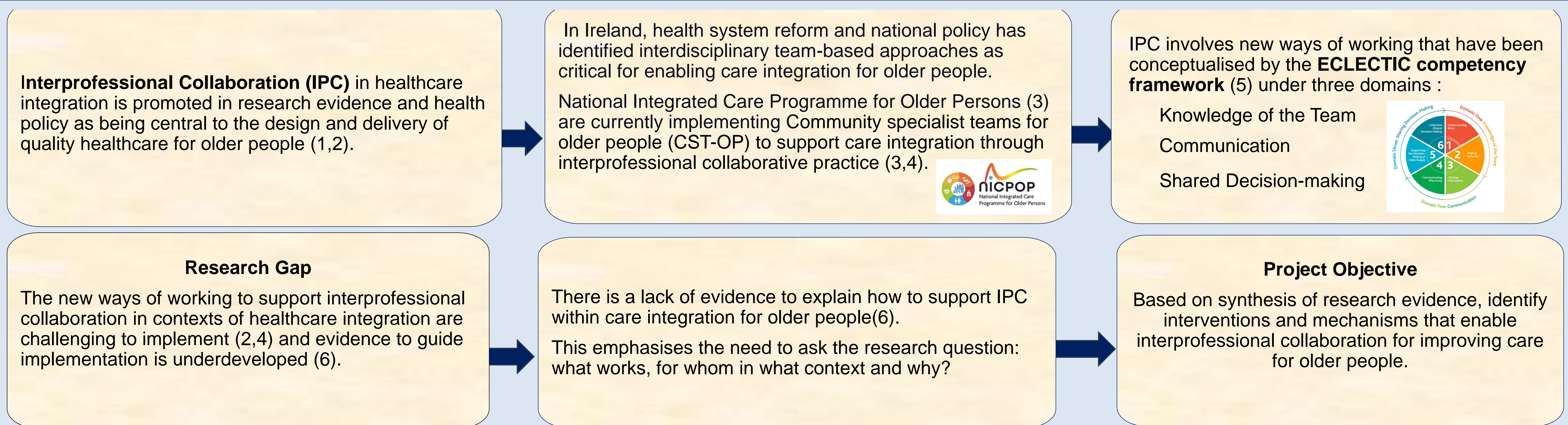


# Interventions to promote effective interprofessional collaboration that improves care outcomes for older people: a realist synthesis of evidence.

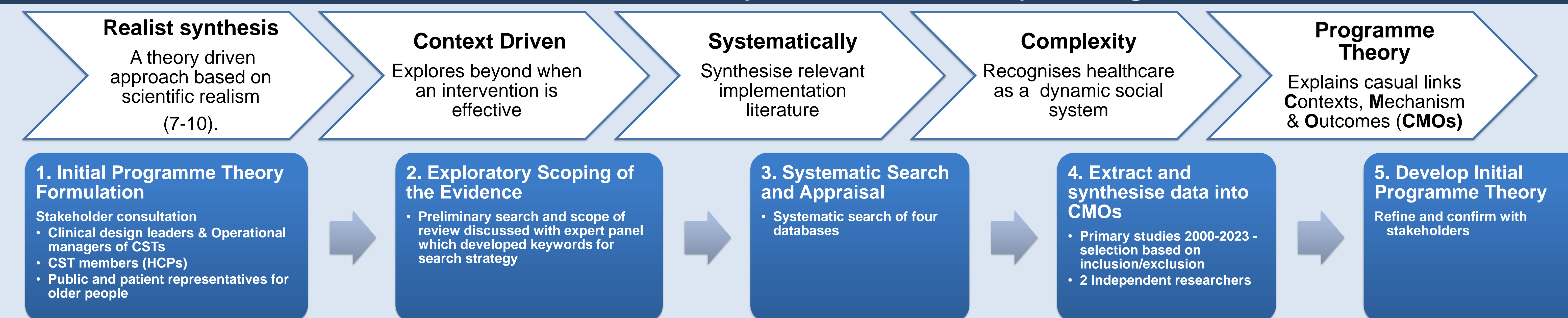
Davies C<sup>1</sup>, O'Donnell D<sup>1</sup>, Radomska A<sup>1</sup>, Ní Shé É<sup>3</sup>, O'Shea M<sup>1</sup>, Devaney C<sup>2</sup>, Donnelly S<sup>1</sup>, O'Donoghue G<sup>1</sup>, De Brún A<sup>1</sup>, Whitty H<sup>2</sup>, Harnett PJ<sup>2</sup>, Lang D<sup>2</sup>, Harrison R<sup>4</sup>, McAuliffe E<sup>1</sup>, Ahern E<sup>2</sup>

1 University College Dublin, Dublin 4, Ireland ; 2 National Clinical Programme for Older Persons, Ireland; 3 Royal College of Surgeons of Ireland, Dublin, Ireland; 4 Macquarie University, Sydney, Australia

## Background & Project objective

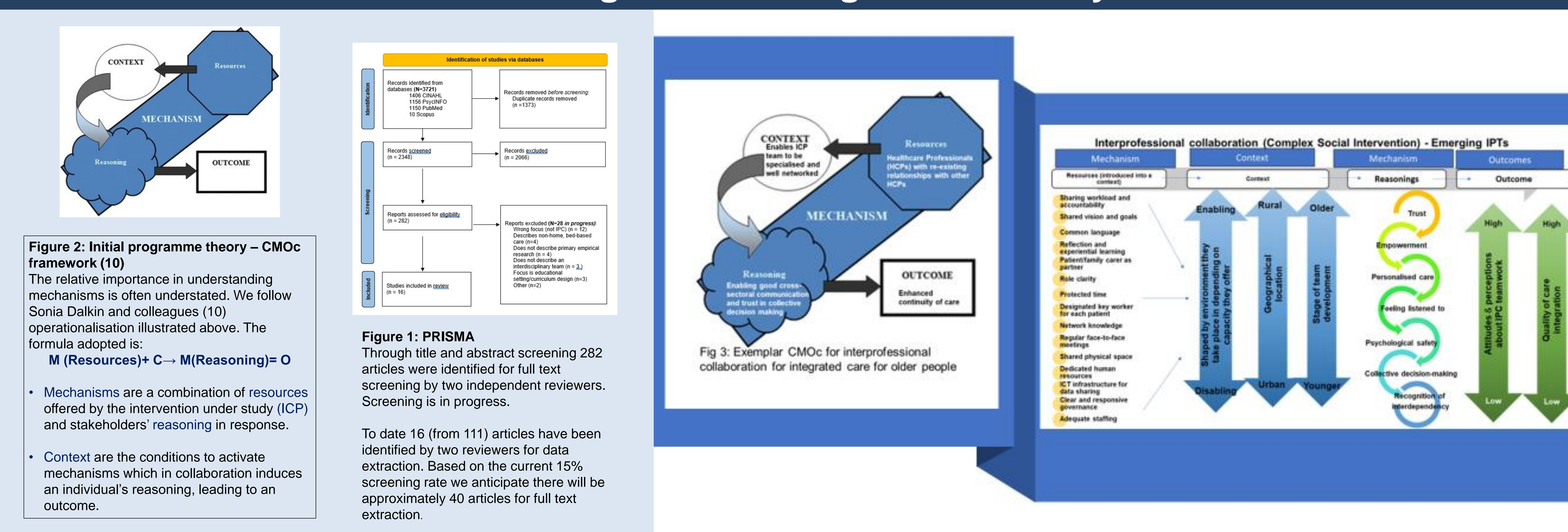


## Method: Realist Synthesis & Study Design



Study design is guided by a five steps process (7,11). Exploratory scoping phase (steps 1-2), Systematic search, appraisal and synthesis phase (steps 3-5). The synthesised evidence will be reviewed and developed into initial programme theories.

## Findings : Initial Programme Theory



## Conclusion

This work is ongoing as part of a multiphase realist evaluation. The finalised IPTS will be tested and further refined through empirical exploration using case study analysis with CST-OPs implemented recently in Ireland (3) to support scale-up efforts across the Irish health system.

The emerging findings contribute for others adopting similar work some contextually relevant evidence that will inform a roadmap for implementation planning to support workforce planning, capacity building and competency development to improve older people health services.

## References

1. Science Advice for Policy by European Academics. (2019). Transforming the future of ageing. In Science Advice for Policy by European Academics. Retrieved April 14, 2023, from <https://sapea.info/topic/ageing/>
2. Health Organisation. (2016). Health workforce for ageing populations 2016.
3. Department of Health. (2021). Sláintecare Implementation Strategy and Action Plan 2021-2023. Government of Ireland. Retrieved March 27, 2023, from <https://www.gov.ie/en/publication/6996b-slaintecare-implementation-strategy-and-action-plan-2021-2023/>
4. Ni Shé, É. N., O'Donnell, D. E., O'Shea, M., & Stokes, D. (2020). New Ways of Working? A Rapid Exploration of Emerging Evidence Regarding the Care of Older People during COVID19. International Journal of Environmental Research and Public Health, 17(18), 6442.
5. O'Donnell, D., O'Donoghue, G.; Ni Shé, E.; O'Shea, M.; Donnelly, S. (2023). Developing competence in interprofessional collaboration within integrated care teams for older people in the Republic of Ireland: A starter kit. Journal of Interprofessional Care, 37(3), 480-490.
6. Ellis, G., & Sevdalis, N. (2019). Understanding and improving multidisciplinary team working in geriatric medicine. Age And Ageing, 48(4), 498-505.
7. Pawson R, Tilley N. (1997). Realistic evaluation. London: SAGE.
8. Rycroft-Malone, J., McCormack, B., Hutchinson, A.M. et al. (2012). Realist synthesis: illustrating the method for implementation research. Implementation Sci 7, 33.
9. Wong, G., Westhorp, G., Manzano, A., Greenhalgh, J., Jagosh, J., & Greenhalgh, T. (2016). RAMESES II reporting standards for realist evaluations. BMC Medicine, 14(1).
10. Dalkin, S.M., Greenhalgh, J., Jones, D. et al. (2015). What's in a mechanism? Development of a key concept in realist evaluation. Implementation Sci 10, 49.
11. Kantilal, K., Hardeman, W., Whiteside, H., Karapanagiotou, E., Small, M., & Bhattacharya, D. (2020). Realist review protocol for understanding the real-world barriers and enablers to practitioners implementing self-management support to people living with and beyond cancer. BMJ open, 10(9).